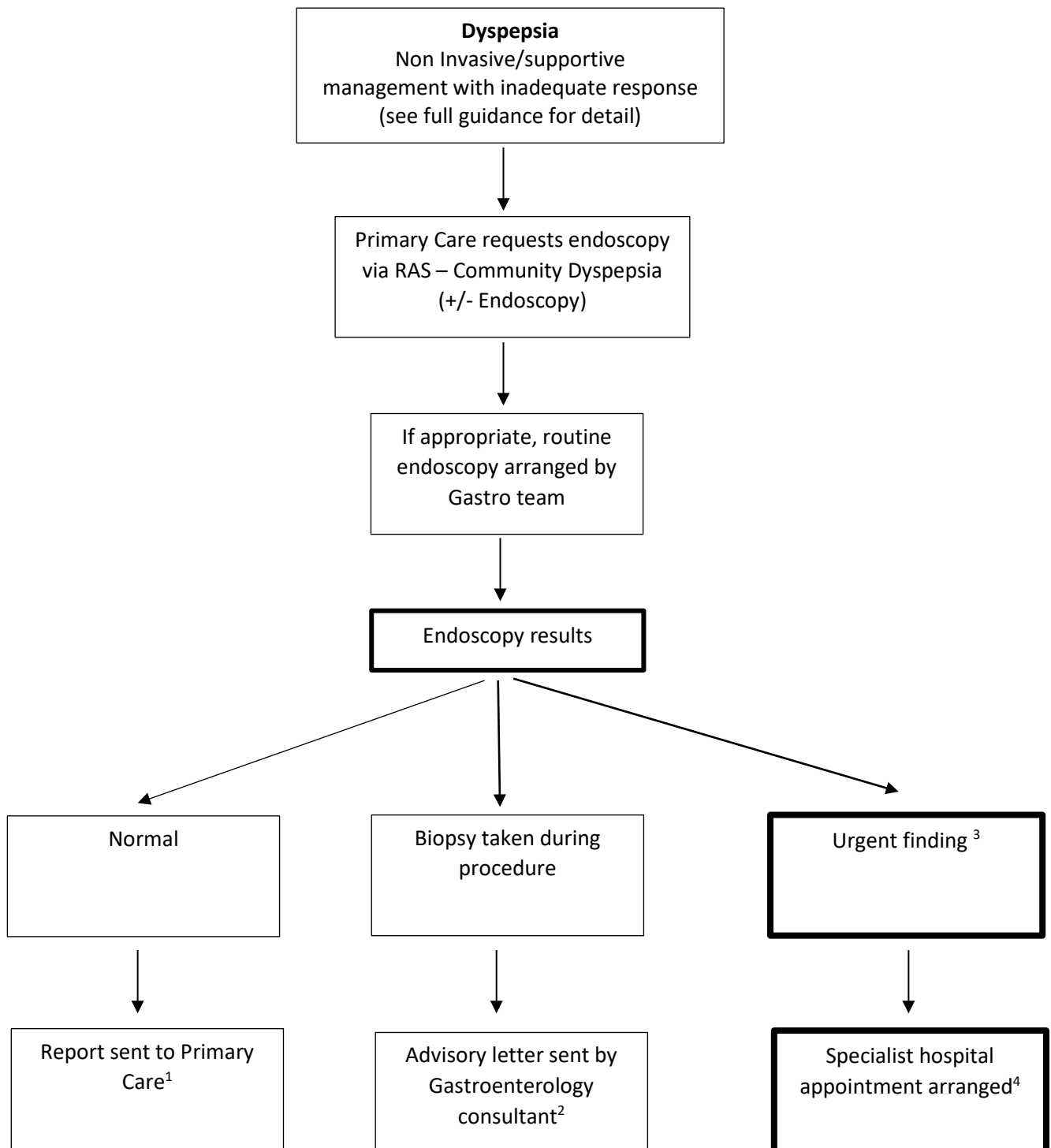


## Overview of steps involved in Community Dyspepsia (+/- Endoscopy)



1. Reports will be checked by Gastroenterology Consultant for quality control
2. Biopsy reports and advisory letter will be sent between 4-6 weeks. If results not available by then, kindly contact us via RAS – Community Dyspepsia (+/- Endoscopy).
3. Secondary care will take over patient care if urgent speciality care is required after endoscopy. In all other situations Primary Care Physician will remain responsible for patient care
4. Specialist Hospital appointment will be arranged by Gastroenterology team